

Digital Hot Air Oven

- Inner Chamber made of S.S. and Outer made of Mild Steel duly powder coating.
- Gap between the walls filled with glass wool or puf insulation.
- Heating elements are made of high grade chrome plated nichrome wire.
- Temp. Range : 50°C to 250°C
- Accuracy : $\pm 1 - 2^\circ\text{C}$

Accessories :

- Air Circulation Fan for Uniform Temperature.
- Digital PID Temp. Indicator cum Controller.
- Digital Timer
- Better Accuracy - Memmert Model.
- Temp. Range : Up to 250°C / 300°C / 400°C

Chamber Size

Ref.: 701 / 1	14" X 14" X 14"
Ref.: 701 / 2	18" X 18" X 18"
Ref.: 701 / 3	18" X 18" X 24"
Ref.: 701 / 4	24" X 24" X 24"
Ref.: 701 / 5	24" X 24" X 36"



Digital Muffle Furnace

- Useful for Ashing, Igniting and heat treating of small parts in chemical, industrial fields.
- Outer body made up of heavy gauge M.S./G.I duly powder coated. Inner muffle with high temp. insulating material.
- Maximum Temp. 1000°C / 1200°C
Working temp 930°C / 1130°C
- Temperature Controlled by Digital PID Temp. Controller cum Indicator.
- Heating elements are made of kenthal wire.

	Size	TEMP. (1000°C)	TEMP. (1200°C)
Ref.: 705/1	9" X 4" X 4"	1500 w	2000 w
Ref.: 705/2	10" X 5" X 5"	2000 w	2500 w
Ref.: 705/3	12" X 6" X 6"	3300 w	3500 w
Ref.: 705/4	18" X 9" X 9"	6000 w	7000 w



Hot Plate

Round

Made of cast iron top and body is of thick Mild steel painted attractively.

Thermostatic control Top M.S. / Cast Iron Plate

Size	Rating
8" Dia	1.5 K.W
9" Dia	1.6 K.W
12" Dia	2.0 K.W

Rectangular

Body made of thick Mild steel Painted attractively.
The thick iron plate is provided on top.

Thermostatic control Top M.S. / Cast Iron Plate

Size	Rating
10" x 12"	1.5 K.W.
10" x 16"	1.5 K.W.
12" x 18"	2.0 K.W.
18" x 24"	3.0 K.W.



Ref. 654

Heating Mantle With Regulator

Heating mantle are made to accommodate several size of round bottle flask and to provide uniform heating. Maximum Surface temperature. 450°C with energy regulator box built in.

Size	Size
100 ml	3 Ltr
250 ml	5 Ltr
500 ml	10 Ltr
1 Ltr	20 Ltr
2 Ltr	50 Ltr

Ref.: 656



Digital Temperature Indicator

Imported Make

Battery operated with 12" long probe & One metre wire

Range : - 50° C to 1300° C

- Temperature Sensor Leaf type
- Temperature Sensor Rod type
- Temperature Sensor Bead type

Ref.: 601



Magnetic Thermometer

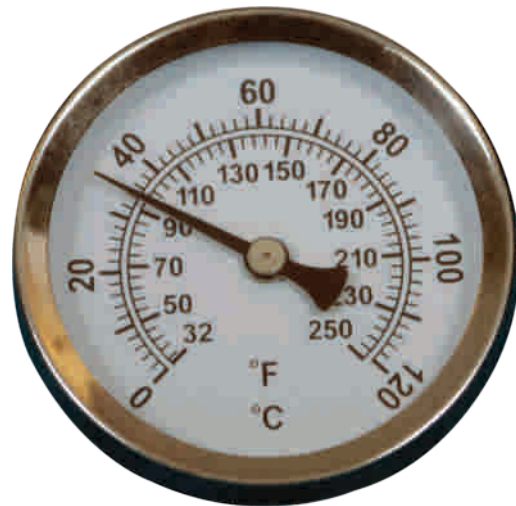
Imported UK made

Surface Temperature Display on magnetic surface
Dial Type

Range : 0 - 120°C

Range : 32 - 250°F

Ref.: 602



Infrared Thermometer

- Range : - 18°C to 400°C
- Accuracy : $\pm 2^{\circ}\text{C}$ or $\pm 2\%$
- Distance/spot Ratio : 8:1

Range : - 50°C to 550°C
Accuracy : $\pm 1.5^{\circ}\text{C}$ or $\pm 1.5\%$
Resolution : 0.1°C
Distance/spot Ratio : 12:1

Range : - 50°C to 1150°C
Accuracy : $> \pm 1.5\%$ or $\pm 1.5^{\circ}\text{C}$
Repeatability : $\pm 1\%$ or $\pm 1^{\circ}\text{C}$
Distance/spot Ratio : 20:1

Range : 200 to 1650°C
Accuracy : $> \pm 1.5\%$ or $\pm 1.5^{\circ}\text{C}$
Repeatability : $\pm 1\%$ or $\pm 1^{\circ}\text{C}$
Distance/spot Ratio : 50:1



Ref.: 603